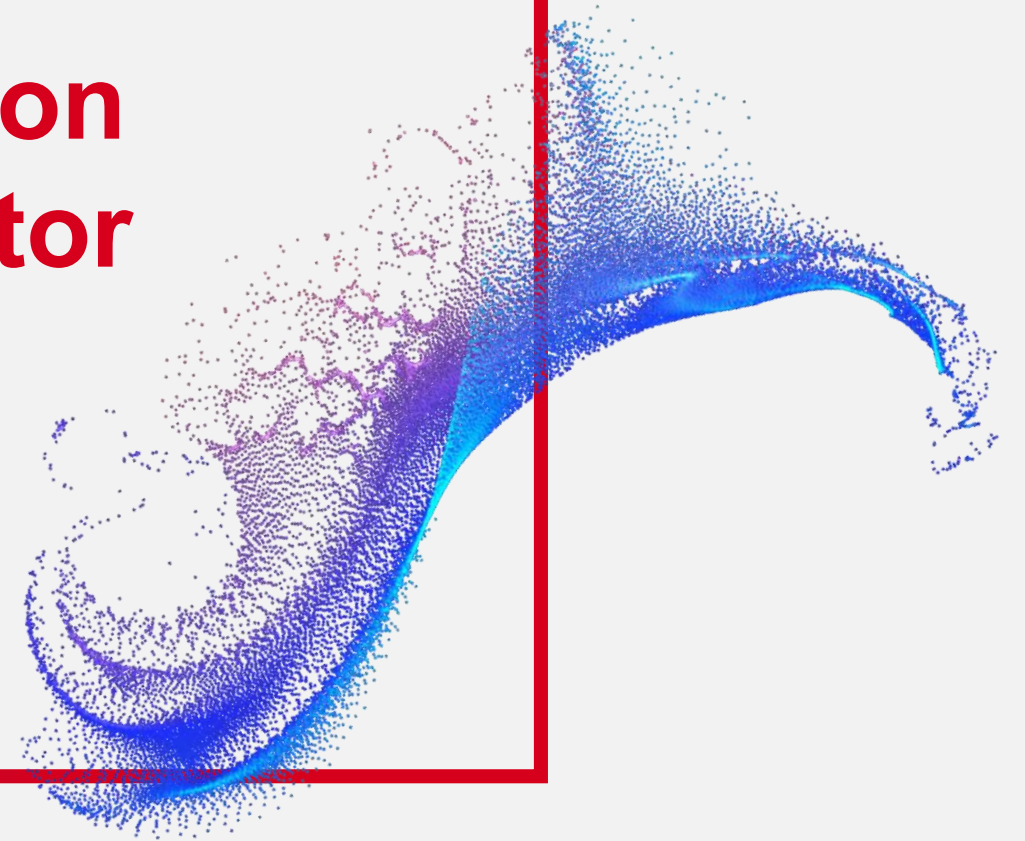


Digital Transformation in the Financial Sector



Tuyen Le

November 2021

**Nash
Tech.**

NashTech - a division of Harvey Nash Group



Established
1988



£1bn
turnover



36
locations


Harvey Nash
Group

**Harvey
Nash.**

Technology Recruitment

Leadership recruitment
Tech expert recruitment
Solutions

**Nash
Tech.**

Technology Solutions

Software Development
Digital Transformation/Consulting
Business Process Solutions

Alumni

Leadership Services

Executive Search & interim
Assessment services
Leadership & Board development

The focus of our customers



Legacy system modernisation

Transform, modernise, migrate and upgrade outdated legacy systems to up-to-date and secure systems which drive cost efficiency and performance optimisation.



System integration

Integrate systems from multiple departments or business units with high degrees of complexity. This provides more consolidated services to the customer, improves internal operations, and reduces operational costs.



Data-driven insights

With large amounts of data that need to be consolidated and analysed, back-end and server administration activities are critical to pulling real-time and accessible information.



Bespoke development and customisation

Analyse, advise and build bespoke software development and customisation to core systems that meet varied requirements. These developments will then help to achieve optimal efficiency in a wide range of activities, especially in mortgage management.

And also:



KYC process and face recognition



Mortgage process management



Financial products and services distribution solutions



Consumer finance solutions



Application conversion and migration



What we learned

01

Data protection

is a key focus not only in the system but during the transformation process

02

Being agile

is a challenge but is a success factor

03

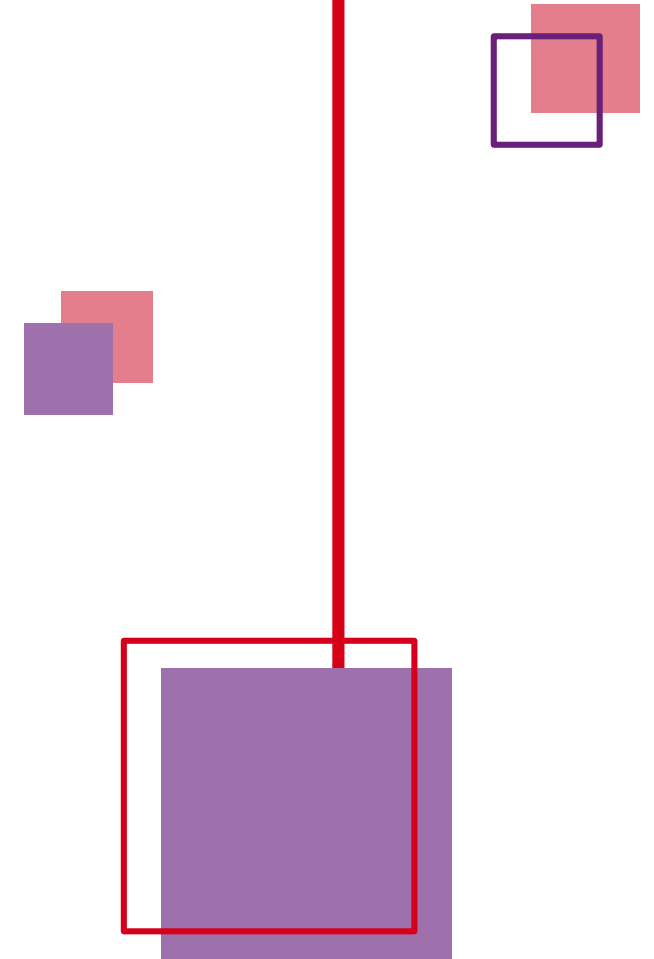
Knowledge transfer

is another success factor

04

Transformation

is also about integrating people



A vibrant blue liquid splash is captured in mid-air against a solid red background. The splash is dynamic, with multiple peaks and valleys, creating a sense of movement. A white rectangular box is superimposed over the center of the splash, containing the text "Thank you" in a bold, white, sans-serif font.

Thank you